

## N-Uface302 Pro Multi Bio



Face



Finger



RFID



Battery  
(Optional)



WiFi



LAN



USB



GPRS  
(Optional)



Access  
Control

## Multi-Bio Attendance and Access Control

### Storage Capacity

Face Capacity	3000
Finger Capacity	10,000
Card Capacity	3000
Max User	3000
Log Capacity	2,00,000

### Features

High-Speed and Accurate Face Identification

Good adaptation for dry, moist and rough fingerprints.

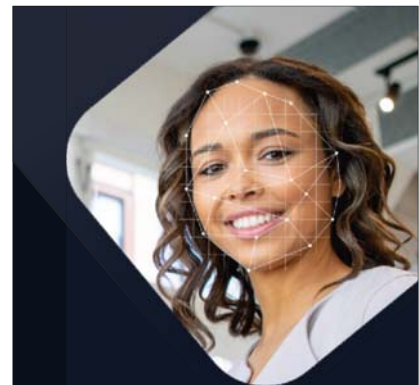
Output relay for door open.

Face, Fingerprint, Card, Password authentication

Supremely low Electric energy consumption.

Highly reliable and durable.

Comprehensive SDK is available for development and integration.



### N-Uface302

"Dive into this ultimate featured from Biomax, with its stunning features and class performance N-UFACE302 is all you need."

# N-Uface302

## Communication Interface

Communication	WIFI, TCP/IP, RS232/485, USB
---------------	------------------------------

## Biometric

Push Data	YES
4G GPRS	Optional
Sensor type	500 DPI
FAR	0.00001%
FRR	0.001%
CPU	1 GHz
Verification time	<=1 second
RF card options	125kHz EM (Standard) / 13.56MHz Mifare (Optional)

## Audio/Visual

LCD	2.8" TFT color screen
Voice instruction	16-bit Hi-Fi voice & sound indication
Language	English

## Access control

Wiegand in & out	YES
Relay	YES
Rs485	Finger Reader & Card Reader
Support Exit Reader	FR12, Wiegand Reader, Remote Push Button, No Touch

## Power & Environment

Battery	Optional
Operating Temperature	0°C ~ 50°C
Power	12V DC / 2A
Dimension	175 x 145 x 79.5mm



Auto Focus



low light Verification



Long Distance Verification



Accepts Color Finger

Software

Desktop, Web, Cloud



Time Attendance



Access Control



Employee Self Service



Mobile App

**Disclaimer** : Brief specifications are mentioned here. specification may change without prior notice. Customers are advised to check with us before purchase. Actual product may differ slightly to that depicted for ongoing product development.

Certified by

